

KEG COUPLERS

PART # C715



Product Name

G system keg coupler (EUROPEAN SANKEY)

Pressure release valve (PRV)

With PRV

Probe thread & Material

1/2''-14 & SS 304

Body material & Finish

Brass & Chrome Plated

Handle type

Ergo (sleek) handle.



G SYSTEM

Product Specification subject to change without notice
Any act of copying distributing or disclosing of the datasheet
Will be liable against policy rights of Pacific Merchants

Krome Dispense
Ph: 0181 - 2600009
Fax: 0181 - 2602130
www.kromedispense.com

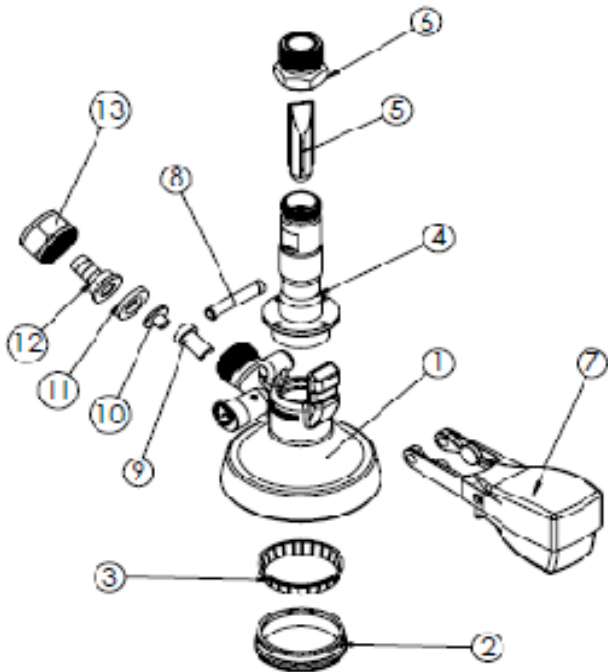
If you have any other technical question about this product please email us at info@kromedispense.com

Pacific Merchants D-74, Focal Point Extn.,Jalandhar, Punjab-144004,India

G SYSTEM KEG COUPLERS PART # C715



Exploded View



ITEM NO.	PART No.	DESCRIPTION	QTY.
1	C715.01	Body	1
2	C715.02	Shany bootem washer	1
3	C715.03	Nylon washer	1
4	C715.05.01	prob	1
5	C715.06	torpad	1
6	C715.12	THREAD CONVERTER OUTER	1
7	C712.10.01	Handle	1
8	C716.09	coupler pin assembly	1
9	C715.15	Duck bill Valve	1
10	C715.16	Silicon valve Retainer	1
11	C715.17	Neoprene washer	1
12	C715.18	TAIL PIECE 5/16"	1
13	C181	BEER HEX NUT	1

Product Specification subject to change without notice
Any act of copying distributing or disclosing of the datasheet
Will be liable against policy rights of Pacific Merchants

Krome Dispense
Ph: 0181 - 2600009
Fax: 0181 - 2602130
www.kromedispense.com

If you have any other technical question about this product please email us at info@kromedispense.com

Pacific Merchants D-74, Focal Point Extn.,Jalandhar, Punjab-144004,India